



Tuscany villages fact sheet

General information

Name of the village	CERTALDO
Province	PISA
Tourist information	<p>Tourist Information Office Via Boccaccio, Certaldo Alto, +39 0571656721 info.turismo@comune.certaldo.fi.it</p> <p>Accessible via a variable step from 3 to 6 cm</p>



TESTED BY: [Handy Superabile Social Promotion Association](#) in 2024

Please note The following information refers to the date of verification shown at the bottom of each sheet. **The Association** is not responsible for any significant changes made by the property after the visit.

Summary

Tuscany villages fact sheet.....	1
General information	1
Description.....	2
How to reach Certaldo	2
Car park.....	4
Route from the car park to the entrance	6
Description of the itinerary	6
Communal toilets	15
Medical practices/healthcare facilities.....	18

Project carried out with the contribution of the





Description

Located in the Florentine Val d'Elsa, Certaldo is the place where Giovanni Boccaccio was born 700 years ago, and is one of the most interesting and evocative villages in Tuscany. Located halfway between Florence and Siena, Certaldo is a small and well-preserved medieval village, with numerous buildings of historical and cultural interest that are worth visiting

How to reach Certaldo

By car	<p>from Florence: Florence-Pisa-Livorno highway, towards Pisa, with the 'Empoli Ovest' exit, finally State Road 429 towards Siena until you find the Certaldo sign</p> <p>from Siena: Florence – Siena junction, exit 'Poggibonsi', then State Road 429 towards Empoli until you find the Certaldo sign</p> <p>from Pisa: Florence, Pisa-Livorno highway, towards Florence, with the 'Empoli Ovest' exit, then State Road 429 towards Siena until you find the Certaldo sign</p> <p>To reach Certaldo from outside Tuscany, from Rome, Milan, Naples or Bologna: exit 'Firenze Signa' on the A1 motorway (Milan-Rome), then the Florence-Pisa-Livorno highway, towards Pisa, with the 'Empoli Ovest' exit, finally State Road 429 towards Siena until you find the Certaldo sign</p>
By plane	Pisa Airport 50 km away and Florence Airport 4 km away





Assistance service for people with disabilities	YES
Embarkation/disembarkation of passengers with reduced mobility	with courtesy chair and ambulift /Finger
Tactile paths for the blind and visually impaired	YES
There is a toilet room accessible with grab handles	YES
By train	
Nearest station	Florence-Empoli-Siena railway line, Certaldo station stop
Assistance service for people with disabilities	NO but it is planned in the Empoli station 27 km away
Blue Hall Reference	Location Florence
Carriage access	with forklift/ramp
There is a toilet room in the station accessible with grab handles	YES
By public and private transport	
Nearest bus stop	Arezzo, Florence and provinces - Autolinee Toscane bus line 33 between Empoli Stazione and Certaldo.
Presence of adapted buses with ramp	It is recommended to contact Autolinee Toscane to ask for confirmation and for the timetables https://www.at-bus.it/it
Presence of taxis with adapted ramp	NO
Eventual notes	





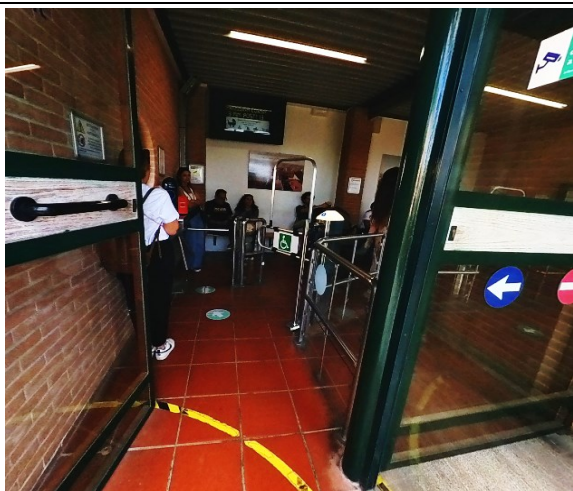
Car park

Public parking nearby	<p>Certaldo Alto can be reached by funicular, on foot or by car by reaching the "Certaldo Alto" car park, in Via delle Mura, the closest but with only 40 parking spaces. It can also be reached by funicular using a parking lot with 60 spaces, or use the parking lots in the center of Certaldo, near Piazza Boccaccio. In the village there is a ZTL (Limited Traffic Zone) whose accesses are controlled by cameras. If holders of the disabled badge, please contact the municipal police at the following number +39 0571 668547 or at the following email ztlcertaldo@empolese-valdelsa.it</p>
Type of public parking floor	asphalt
Presence of parking space reserved for people with disabilities	YES reserved seats in the square Boccaccio Certaldo Basso near the funicular station
Eventual notes	<p>In the lower part the funicular station is located in Piazza Boccaccio 37, while in the upper part it is located near Porta Alberti, one of the medieval entrance gates to the village.</p> <p>A ride is usually ensured every 15 minutes. The funicular departs every 15 minutes. The ticket costs 1 euro and includes reductions for the disabled. For the use of the funicular and its timetables, please read the information at the following link: https://www.at-bus.it/it/linee-e-orari/funicolari-certaldo</p>





Reserved parking in Piazza Boccaccio, 50 m from the funicular that leads to Certaldo Alto near Porta Alberti in via Carlo Alberti



In the photo on the side funicular entrance flat from the station in Piazza Boccaccio and at the bottom exit from the Certaldo Alto station at Porta Alberti





Route from the car park to the entrance

Route from the car park to the starting point	flat and by funicular
Distance from parking to entrance	50 meters from the funicular that leads to the heart of Certaldo Alto
Type of trail surface	asphalt
There are indicators and tactile maps	NO

Description of the itinerary

Length	
Along the itinerary there are maps and tactile signs for the blind	NO
Description of the itinerary	The historic village, also known as the Castle , is enclosed within the walls on which the ancient access gates open: Porta





Alberti, Porta al Sole and Porta al Rivellino.

It can be accessed via the funicular that starts from Piazza Boccaccio, Certaldo basso and takes us to Via Carlo Alberti.

Continuing along this street, after a few tens of meters on the left we cross the main street of the village, via Giovanni Boccaccio.

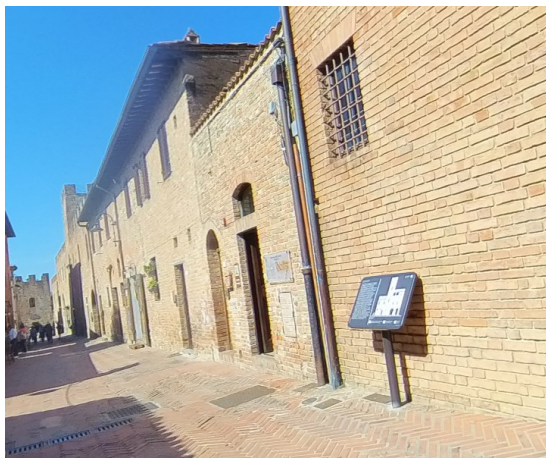


After a few tens of meters we find the Nail Museum on the left

Via Boccaccio, 35

This original museum is set up inside Palazzo Giannozzi, an ancient manor house, now home to artisan workshops that carry out live work. It presents a unique collection of nails from every era and shape, tools from peasant civilization and wood carvings. The collection is the work of Giancarlo Masini, historic carpenter and artist, known to all as "Beppe Chiodo".



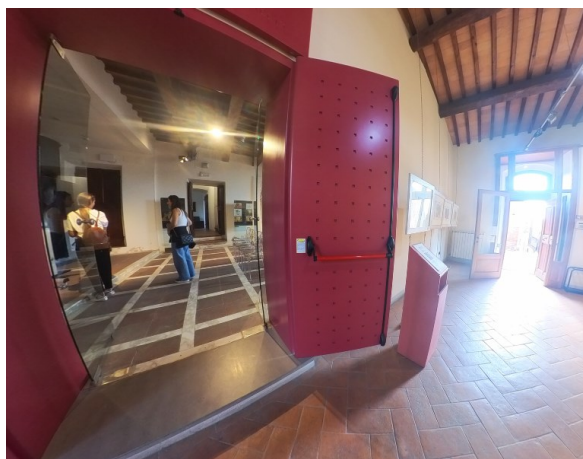


Boccaccio's House

Via Boccaccio 18 – Certaldo Alto (Fi) Tel. 0571.664208 – Fax 0571.664208

Accessible only via a 23 cm high external step and a 15 cm high step from the atrium to access the first room

Located in Certaldo Alto, it forms a single museum circuit together with Palazzo Pretorio and the museum of sacred art. The great Florentine poet died inside the house in 1375.



The visit to Boccaccio's house museum is spread over three floors, inaccessible to those who travel with a wheelchair

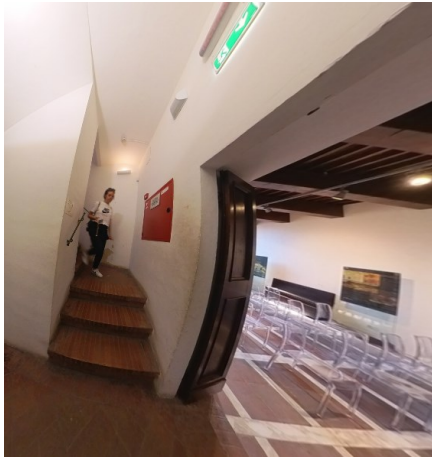
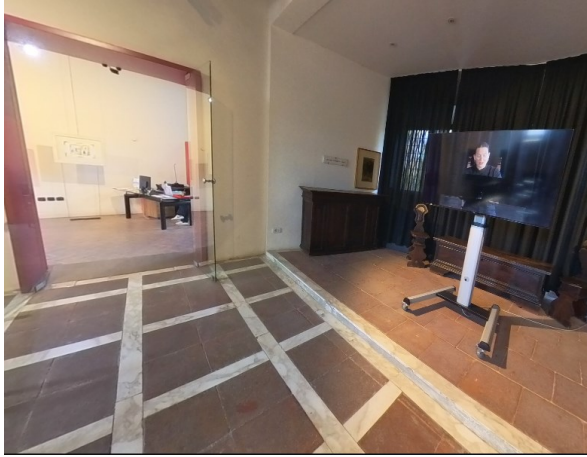
On the ground floor the life and works of the poet are presented through a film, on the first floor it is possible to visit the library and the fresco, while on the second floor you can reach the tower from which you can admire a splendid view of the Val d'Elsa.



Project promoted by



Regione Toscana



on the second floor you reach the tower, through a staircase with 74 steps from which you can admire a splendid view of the Val d'Elsa

Project carried out with the contribution of the



Presidenza del
Consiglio dei Ministri
Ministro per la disabilità



Church of Saints Jacopo and Filippo

Piazza S. Iacopo e Filippo

Located halfway between the house of Boccaccio and the Praetorian Palace, accessible only by 4+1 steps



Very similar to the church of Saints Thomas and Prosper, the **Church of Saints Jacopo and Filippo** is famous because inside there are the remains of Giovanni Boccaccio, and of the patron saint of Certaldo the blessed Giulia Della Rena.



Museum of Sacred Art

Piazza SS. Iacopo e Filippo – Certaldo Alto
Tel. 0571.661219

Accessible from the square via a small step 2 cm high and door width 100 cm.

Inaugurated in June 2001, the museum of sacred art of Certaldo is located inside the former convent of the Augustinians, next to the church of Saints Jacopo and Filippo.





Inside there are works of sacred art from the churches of Certaldo and its immediate surroundings; The exhibition is divided into 7 rooms, including art galleries, goldsmith exhibitions and exhibitions of priests' vestments.

From the museum you can visit the cloister of the former convent, exiting through a leaf door with a horizontal bar and a 73 cm long ramp with a slope of 11.3%; on the right side the basement with the crypt accessible only by a staircase



As soon as you exit on the left you can admire the cloister of the former Augustinian Convent





First Tiled Ramp



Second ramp



Third entrance ramp

Praetorian Palace

Piazzetta del Vicariato, 1 – Certaldo Alto
Tel. +39 0571.661219

Accessible from Via Boccaccio through a first tiled ramp, uphill, with a slope of 14.7%, a second ramp with a slope of 9.4% and a third ramp for the entrance to the archaeological section on the entrance door with a slope of 14%



Entrance to the archaeological section



Stairlift archaeological room





The stairlift leads to the archaeological room



The Praetorian Palace is accessible via a ramp to the most important monument, the ancient residence of the Alberti counts which was built at the end of the twelfth century

The prisons, the audience hall, the archive, the chapel and the private quarters of the Vicars, the Florentine magistrates, can be visited.

On the façade and inside the palace there are numerous coats of arms, which represent the effigy of the family of each Vicar who ruled the city. On the right is the clock tower, dating back to the fifteenth century.



The visit begins in the large vaulted atrium, passes through a series of very interesting rooms located on the ground floor, including the Knight's room, the Audience Hall (the 1st access ramp into the atrium with a 5.2% slope), the civil prison and the vicar's chapel (2nd access ramp into the atrium with a 4% slope), as well as the criminal prisons and women's prisons (accessible by steps).

Going up to the first floor you pass to the ancient residence of the Vicar.





The Audience Hall



The Vicar's Chapel



The first floor can be visited by elevator that can only be used if accompanied by staff.

Call button 100 cm from the ground and useful door width 78 cm.

The Clock Tower is only accessible via a 53 cm wide door and spiral staircase



Next to the Praetorian Palace, there is the **Church of San Tommaso and Prospero**, from the early thirteenth century, the oldest church of the Castle

Accessible only via 7+4 steps.

Small church, the oldest in Certaldo Alto, also in red brick, built in Romanesque-Gothic style. It is no longer used to celebrate mass, however it can be visited. The church is also used for private events, a conference room and an exhibition venue.





Communal toilets

There is an accessible toilet	Yes
Location of the toilet room	Next to the Nail Museum in via Boccaccio, 35
How to access the premises	Exit ramp from the museum to the garden 126 cm long and 4.7 % slope or from the outside garden on the museum side via 3 ramps in succession
Usable width of the entrance door	79 cm
Type of door	flowing
Toilet height	48 cm
Toilet seat with open front tooth	YES
Support handles	Grab bar on the right
Flexible shower on the side of the toilet	NO
Free space on the sides of the toilet	left 35 cm on the right greater than 90 cm frontal Above 90 cm
Electric doorbell/telephone on the side of the toilet	NO
Washbasin with space underneath for wheelchair approach	69 cm
Height from the ground lower edge mirror	Missing mirror
Baby changing table	NO
Eventual notes	





There is an accessible toilet	Yes
Location of the toilet room	in the Museum of Sacred Art
How to access the premises	Small step of 2 cm
Usable width of the entrance door	of the anteroom 90 cm and of the bathroom cm
Type of door	flowing
Type of handle	Automatic/Sliding
Toilet height	53 cm
Toilet seat with open front tooth	YES





Support handles	Reclining grab bar on the right and fixed wall grab bar on the left
Flexible shower on the side of the toilet	NO
Free space on the sides of the toilet	left greater than 25 Cm right 90 cm frontal Above 90 cm
Electric doorbell/telephone on the side of the toilet	YES
Washbasin with space underneath for wheelchair approach	72 cm
Height from the ground lower edge mirror	Missing mirror
Baby changing table	NO
There is a shower	YES
The shower is flush with the floor	SI open type with ups and downs
Eventual notes	
	
Eventual notes	Other accessible toilets are located in Via delle Mura, a few meters from Via Boccaccio

There is an accessible toilet	Yes
Location of the toilet room	In Via delle Mura, a few meters from Via Boccaccio





How to access the premises	Via ramp 73 cm long and 4.3 % slope
Usable width of the entrance door	87 cm
Type of door	with door that can be opened outwards
Type of handle	Automatic/Sliding
Toilet height	53 cm
Toilet seat with open front tooth	YES
Support handles	Reclining grab bar on the right and fixed wall grab bar on the left
Flexible shower on the side of the toilet	NO
Free space on the sides of the toilet	left Above 25 cm right 90 cm frontal Above 90 cm
Electric doorbell/telephone on the side of the toilet	YES
Washbasin with space underneath for wheelchair approach	72 cm
Height from the ground lower edge mirror	Missing mirror
Baby changing table	NO
There is a shower	YES
The shower is flush with the floor	SI open type with ups and downs
Eventual notes	

Medical practices/healthcare facilities

Hospitals near the property	Ospedalino Nuova Casa della Salute di Certaldo ASL Toscana Centro Piazza Macelli 10, Certaldo, with 14 clinics, 12 doctors of Medina Generale and 2 family pediatricians; outside First Aid Point (P.P.S.) , with ambulance tel. +390571/878870
-----------------------------	--



Project promoted by



Regione Toscana

	Azienda Ospedaliera Senese, V.le Mario Bracci, 11, Siena
Other healthcare facilities	

TESTED BY: [Handy Superabile Social Promotion Association](#) in 2024

Project carried out with the contribution of the



**Presidenza del
Consiglio dei Ministri**
Ministro per la disabilità